



www.indianametal.com • 765-657-2828 • 459 E US HWY 36, Bainbridge, IN 46105



ASH GRAY



BLACK



CHARCOAL



BURNISHED SLATE



COCOA BROWN



LIGHT STONE



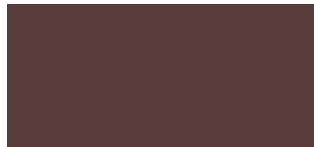
TAN



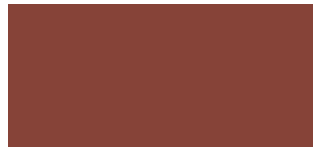
IVY GREEN



OCEAN BLUE



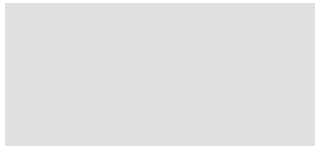
BURGUNDY



RUSTIC RED



CRIMSON RED



BRIGHT WHITE



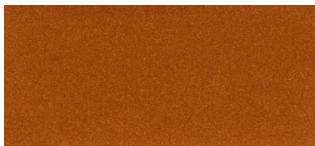
SLATE GRAY



CLAY



BEIGE



COPPER PENNY



MATTE BLACK



GALLERY BLUE



GALVALUME



OLD TOWN GRAY



AGED BRONZE



REGAL WHITE

Colors may vary slightly from actual metal.  
Painted swatches are available by request.

**SHERWIN-WILLIAMS.**  
Coil Coatings

Sherwin-Williams \* is a trademark of SWIMC LLC.





COLOR NAME	ENERGY STAR CRITERIA		STOCK AVAILABILITY MATRIX			
	SR	SRI	24GA	26GA	28GA	29GA
Aged Bronze	.28	27	●			
Ash Gray	.46	52		●		●
Beige	.69	84			●	
Black	.31	31		●		●
Bright White	.69	84		●		●
Burgundy	.29	29		●		●
Burnished Slate	.34	35		●		●
Charcoal	.37	31	●	●		●
Clay	.38	41				●
Cocoa Brown	.35	37		●		●
Copper Penny	.51	58				●
Crimson Red	.31	31		●		●
Gallery Blue	.26	24				●
Galvalume	N/A	N/A	●	●		●
Ivy Green	.28	27		●		●
Light Stone	.56	65		●		●
Matte Black	.26	25	●	●		●
Ocean Blue	.31	31		●		●
Old Town Gray	.41	45		●		
Regal White	.85	83	●			
Rustic Red	.36	38		●		●
Slate Gray	.15	15			●	
Tan	.47	53		●		●

Colors shown represent the actual color as accurately as modern printing technology allows. Please contact us for a free metal sample to verify color. Ask your sales representative about additional colors or gauges that may be available. Oil canning is an inherent part of light gauge cold formed metal products and is not cause for rejection of product. Please contact your sales representative for ways to mitigate oil canning.